

AURA Level 2 Processing

Chris Weaver
March 17, 2010

Available Forms of Data

- From L1
 - Calibrated Waveforms
 - rapcalTimes file
- From L2
 - Waveforms with timing information
 - RadioHitFile file

The rapcalTimes File

- Each line is a trigger, ordered by time
- Available data includes:
 - timestamp
 - mainboard ID
 - associated waveform file
 - RCO correction data
 - Lots of low-level stuff

The RadioHitsFile File

- Also triggers ordered by time
- Has estimated hit times, estimates of baseline and spread, rough total power
- Details at http://icecube.wisc.edu/~cweaver/AURA_L2/

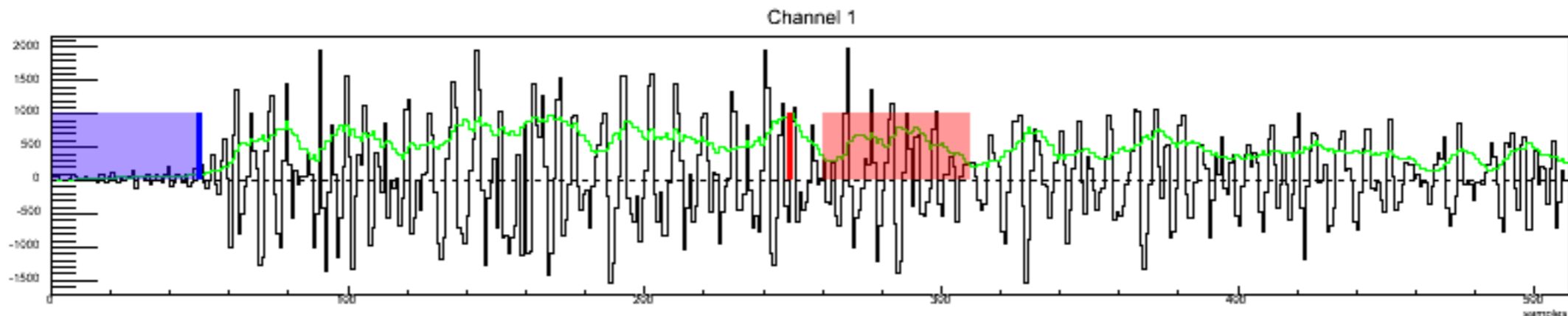
Data Layout in Filesystem

- Run Directory
 - rapcalTimes.txt
 - RadioHitFile.txt
 - gzipped tarball of 'csv' waveform files
 - waveform files
 - symlink to rapcalTimes.txt

Pulse Detection Algorithms

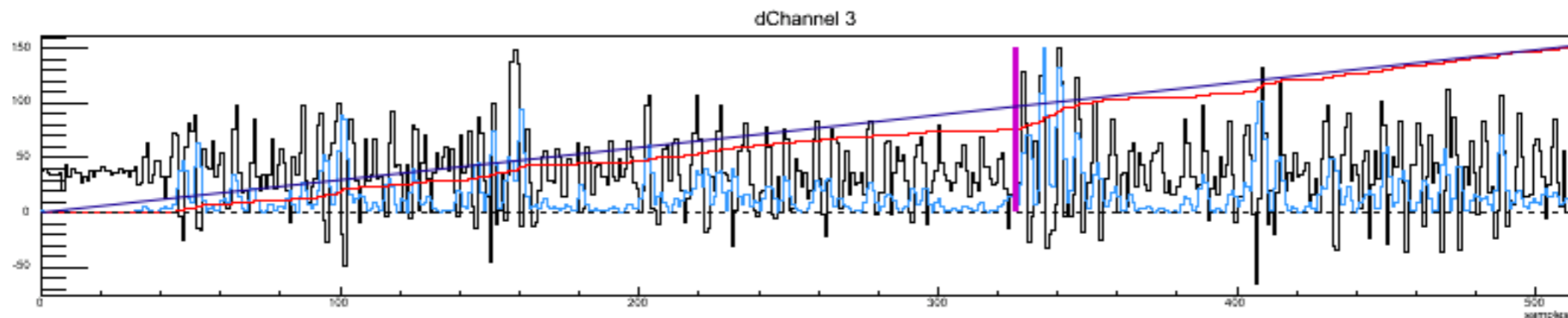
'HitFinder' Method

- Rectifies (takes the absolute value of) and smooths the input waveform with a moving average
- Tries to find the start of a pulse by picking a point before which the average value is significantly lower than the average shortly after the waveform maximum

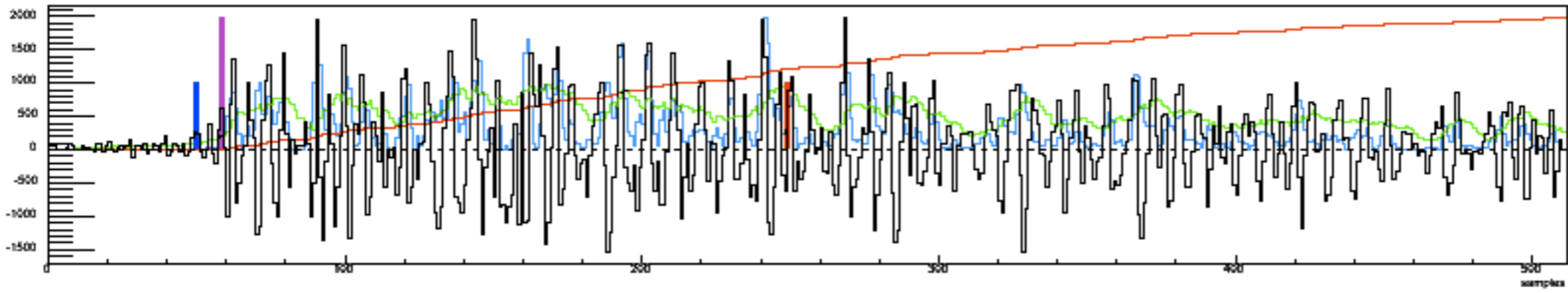


'Maximum Deviation' Method

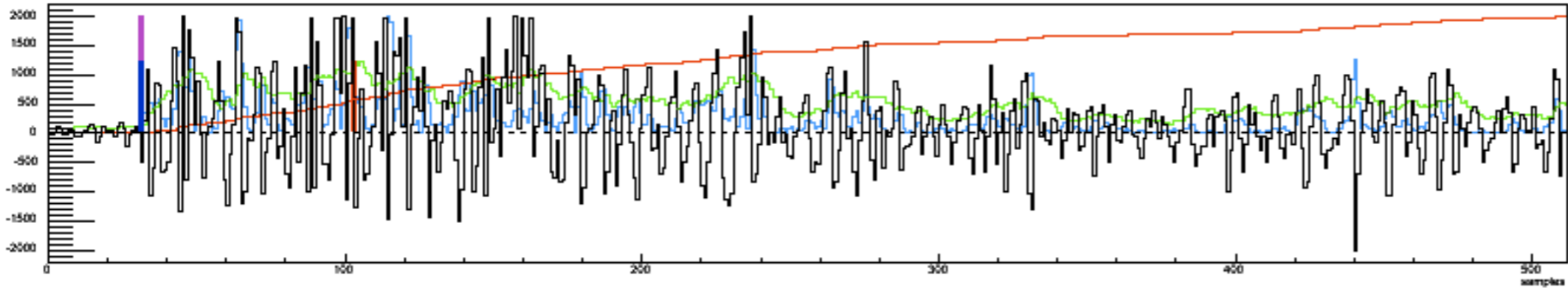
- Uses some tricks with the FFT to smooth the waveform
- Looks for the point where the integral of the squared waveform deviates most from a straight line



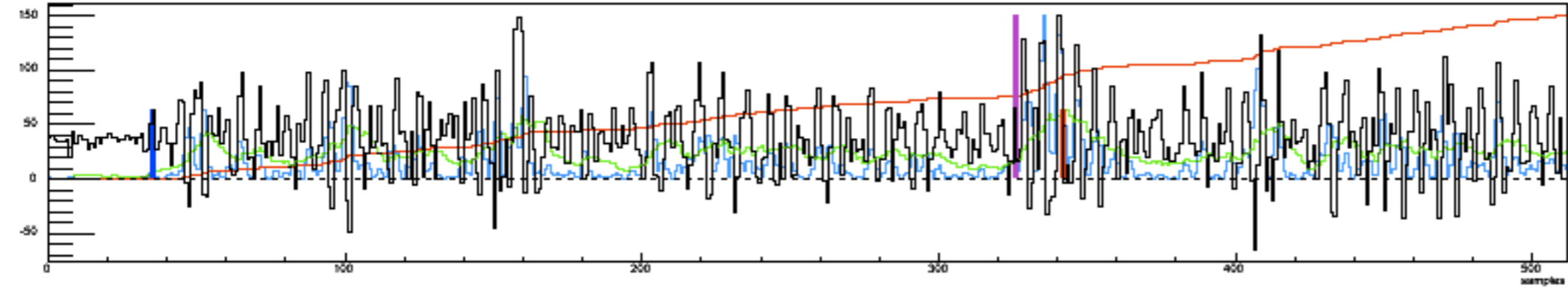
Channel 1



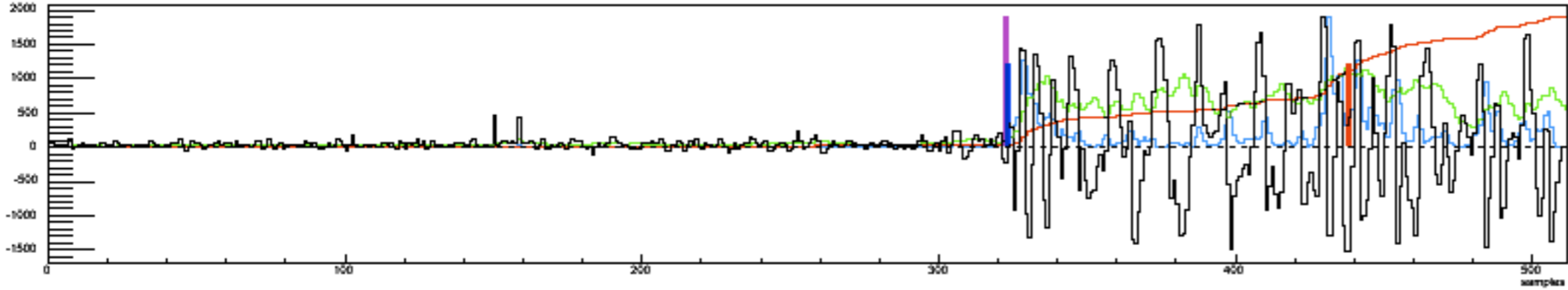
Channel 2



Channel 3



Channel 4



- Original Waveform
- Moving Average
- FFT Smoothed
- Squared Integral
- HF Maximum
- HF Hit Time
- MD Hit Start